



7210-SP soundproof midi comms and server cabinet



Superior sound attenuation midi cabinets

With cooling ability up to 1.5kW

Product overview and technical data





## Overview

### 7210-SP sound proof midi cabinet

As many office based servers, active equipment and their related cooling apparatus become more powerful to sustain the demands we make from them, they are inevitably becoming noisier in the process. These background noises can lead to an impractical office working environment and they also run the risk of being in breach of EEC guidelines if too loud. The UCoustic 7210-SP sound proof cabinet continues the tradition of quality, style and innovation associated with the USystems repertoire of intelligently designed products.

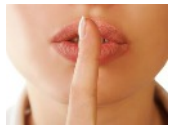
- ❑ Houses all major server brands
- ❑ Up to 15db noise attenuation
- ❑ Superior cable management
- ❑ Multi server practice
- ❑ Multi depth mounting
- ❑ Up to 1.5kW of cooling
- ❑ Front and rear mounting angles
- ❑ Lockable easy access side panels
- ❑ One key fits all locks
- ❑ Quick release cladding
- ❑ Left or right hand hinged front door
- ❑ Includes a 5 way UK PDU

Available in 12U and 18U heights, 1100 deep and 600 wide, the 7210-SP soundproof midi server is a lower cost alternative to the UCoustic 9210 cabinet and is ideal for installations which don't require the same level of enhanced noise reduction and cooling as the UCoustic 9210 cabinet.

- UP TO 15db NOISE ATTENUATION**
- UP TO 1.5kW OF COOLING** with additional fans
- 250kg WEIGHT LOADING** evenly spread



UCoustic 7210-SP sound proof midi cabinet



## Standard specification

### 7210-SP 600w sound proof midi cabinet

Comprising of 4 corner posts, lid and base inclusive of front and rear mounting angles, assembled with Tough Torque™ fixings, lockable front solid steel door, lockable side access panels, cable entry bottom cover, assembled fully configured, finished in Black RAL 9005



18U 7210-SP soundproof cabinet showing rear plenum chamber

#### Available in 1 width, 1 depth and 2 heights

Usable height	12U	18U
*External height	630mm	897mm
600 wide	✓	✓
1000 deep	✓	✓
Actual depth including rear plenum chamber	1140mm	1140mm

\*Excluding gliding feet or castors

#### Cabinet Loading:

Tested to 250kg evenly distributed throughout the cabinet

#### Materials and finish:

CR4 steel

FT80 soundproof foam

FT-60 solvent free adhesive scrim backing

Textured powder coat Black RAL 9005

Cabinet manufactured in accordance with IEC 297 3 and EIA

STD 310 for panels and racks housing electronic equipment

(Other colour options are available on request)



18U 7210-SP soundproof cabinet with side access panel removed

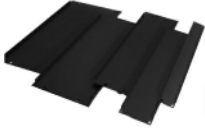


# 7210 Accessories overview

## Thermal management



**Quick fit and sound proof blanking panels**



Blanking panels play an important role in airflow management. A major benefit is the prevention of hot air re-circulation which eliminates the risk of hot spots.

**Top cover fan tray**



7250 top cover fan tray available in 2 way options without any loss of U space. Available in low noise or high speed versions to assist in the removal of heat.

**Rack Mount Fan**



1U high 3 or 6 way 19" rack mount fan trays assist in the removal of heat

**Thermostatic Controller**

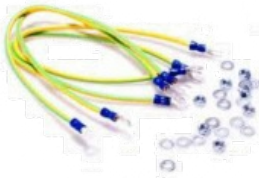


For use with standard or rack mount fan trays

## Earthing

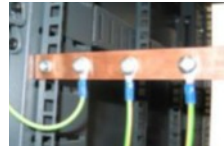


**Earth Bonding Kit**



Standard cladding door earth bonding kit

**Copper Bus Bar**



Horizontal and vertical 3mm or 5mm thick solid copper options

**ESD Kits**



Comprising earthing strap, coiled cable and an earthing plug

**Jumper Ring Panels**



Ensure best cabling practice by utilising 19" jumper ring panels, available in 1U and 2U heights.

## Cable management



## Shelving

**Cantilever shelf**



Easy to fit shelving solution suitable for mounting non 19" equipment. Mount directly to the 19" mounting angles with cage nut fixings (included).

**Fixed Shelf**



Standard or heavy duty fixed shelves with a maximum load bearing of 50kg and 100kg respectively - evenly distributed.

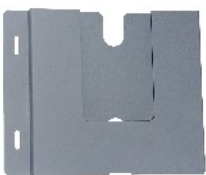
**Chassis runners**



Simple and cost effective alternative to cantilever and fixed shelving. Easy to fit and allows you to support and withdraw full width products with safety.

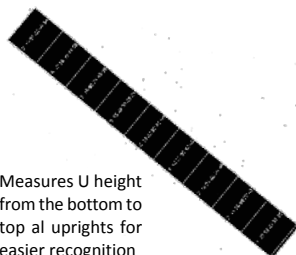
## Miscellaneous

**Document Wallet**



Providing a neat solution for storage of paperwork or manuals. Can be fitted inside or outside door or side panels

**U Measure Strips**



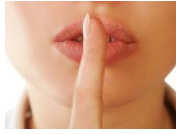
Measures U height from the bottom to top al uprights for easier recognition

**Cage Nut Fixings**



Cage nuts, bolts and washers for rack mounting equipment in cabinets

## Also available 7250-SP sound proof



### 700w wall box

The USpace 7250-SP 700w x 600d wall box is available in three heights 12U, 18U and 21U and is ideal for offices or rooms where active equipment noise is an issue and space is at a premium.

- Rigid bolted construction
- 700mm width enables superior cabling
- Up to 15dB noise attenuation
- Up to 1.5kW of heat dissipation
- Additional top & bottom plenum chambers for greater noise reduction
- Multi cable access through the lid and base with soundproof cable entry
- Front and rear mounting angles
- Lockable easy access side panels
- One key fits all locks
- 250kg weight loading (distributed evenly)
- Quick release cladding with high quality soundproof foam
- Left or right hand hinged front door
- Versatile



**UP TO 15db NOISE  
ATTENUATION**

**UP TO 1.5kW OF  
COOLING**

**UCoustic™**  
19" soundproof cabinets

High performance soundproof cabinets  
keeping IT quiet and cool

Product overview and technical data

**ColdLogik™**  
CL20 Rear Cooler range

Unrivalled data centre cooling  
Perfect climate - perfect control

Product overview and technical data - metric

**UTelligent™**  
Secure Space range

Access, security and environmental system  
Intelligent locking and monitoring solutions

Product overview and technical data

**UTelligent™**  
Intelligent power range

Power, security and monitoring solutions  
Featuring cost effective iPower technology

Product overview and technical data

**ColdLogik™**  
"CAP" Controlled Air Path

Passive and active Controlled Air Path  
incorporating UTelligent™ technology

Product overview and technical data

**ColdLogik™**  
"DAX" Directional Airflow eXhaust system

Energy efficient heat removal and redistribution  
incorporating UTelligent™ technology

Product overview and technical data

**ColdLogik™**  
Aisle air containment solutions

Hot, cold, horizontal, vertical or convex aisle systems  
Perfect climate - perfect control

Product overview and technical data

**USpace™**  
7210 19" midi cabinet range

Data-comms and server cabinets  
Including the 7210 midi soundproof cabinet

Product overview and technical data

**USpace™**  
4210 19" cabinet range

Multi function cabinets and accessories  
Stylish, practical and versatile

Product overview and technical data