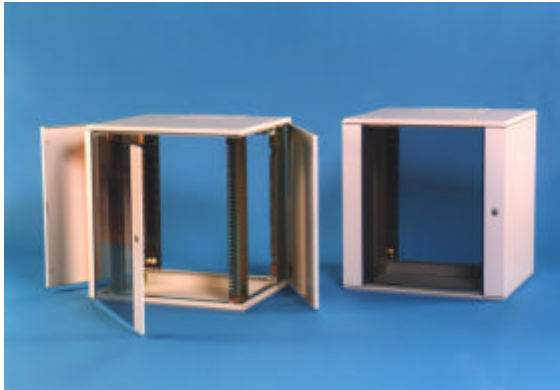




TF wall box

Overview:



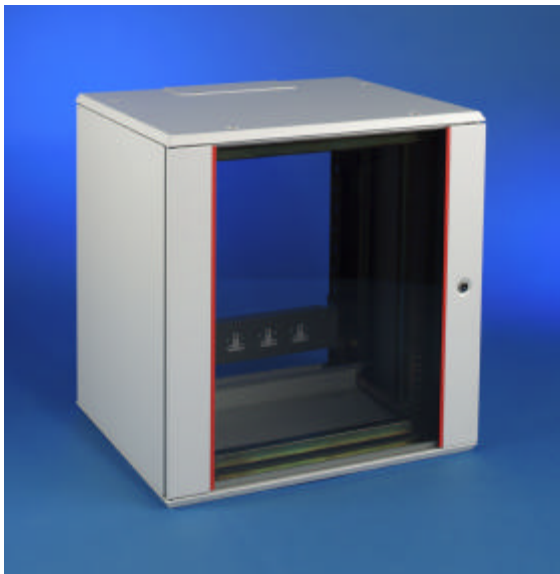
Unique, innovative design, using a patented cantilevered tubular frame, enabling TF Wall Boxes to provide significant installation and end-user benefits.

Available as standard in Fixed Frame or Swing Frame /Networking versions, to accept 19" or ETSI mountings. An impressive selection of standard options provide the ultimate application-friendly wall box range.

Fixed Frame:

TF Fixed Frame wall boxes are available with 19" (front/rear adjustable) or ETSI mountings. Supplied fully assembled with the following items:

- Frame
- Top and bottom panels
- 2 gland plates
- 2 side panels - plain or vented
- 2 cable strain relief bars, top/bottom rear
- Front door in safety glass
- Mounting angles - 19" or ETSI



Swing Frame:

Ideal for networking, cabling/patching or any applications where maximum rear equipment access is needed.

The TF wall boxes provide a massive 225° opening and can pivot left or right - select to suit. Fitted with 19" mounting angles or ETSI

Supplied fully assembled with the following:

- Frame
- Top and bottom panels
- 2 gland plates
- 2 side panels - plain or vented
- 2 cable strain relief bars, top/bottom
- Swing frame with 19" or ETSI mountings
- Front door in safety glass

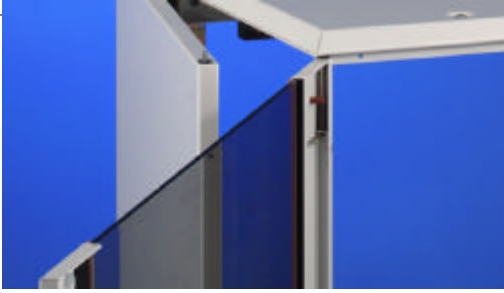


Standard Product:

Available in the following standard sizes:

Heights – 6, 9, 12, 15 and 21U
Depths – 350 and 500mm
Width – 640mm

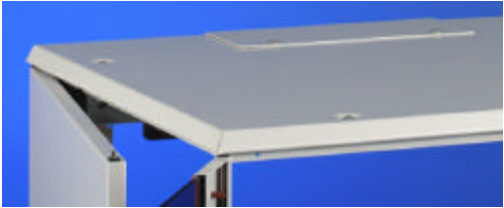
TF wall box



Front Door / Side Panels

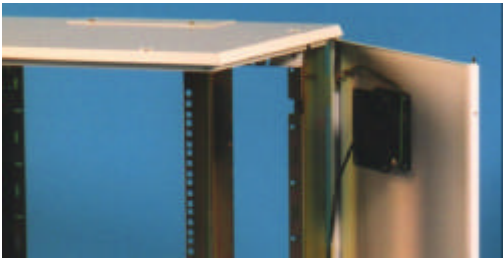
Glazed, key lockable door in safety glass. Hinges left or right. TF side panels can pivot from the front or the rear and are secure, removable, via quick release internal latches. Two types are available as standard;

- Plain (2)
- Vented (2) - with 2 punched grilles in each panel, sized to suit 120mm square axial fans.



Gland Plate - top and bottom

A removable gland plate is fitted in the top and bottom panels. The TF Wall Box cantilevered design enables cable to run immediately behind the wall mounted enclosure without touching or obstructing the enclosure when the gland plate has been cut to suit. The TF wall box can therefore be fitted over an existing wall mounted cable run or kept clear of new cable.



Thermal Control

Thermal dissipation is achieved with the TF 'vented' side panel, punched grilles.

Fan assisted:

Additional cooling assistance is possible by adding 120mm sq axial fans that fit directly over the TF 'vented' side panel punched grilles.

TCM (Thermal Control Module)

Can control up to 6 off 12VDC fans. The TCM has identical footprint to industry standard 120mm square axial fans to simplify mounting.



Power Distribution

An extensive selection of switched power distribution units (PDU's) in horizontal and vertical mounting to suit a wide mix of electrical standards.

19" Panel PDU's

Most UK, European and International electrical switched sockets are available fitted with 19" front panels and include:

- 13A 'T' socket
- 13A square face plates
- EC
- 'Schuko'

2 'U' high mounting brackets are available to allow mounting of Power Distribution Units in rear of cabinet.



Floor Mounted Plinth

- Enables 500mm deep TF Wall Boxes to be floor mounted and raised 150mm
- Provides increased cable entry through base
- Removable front/rear gland plates
- Increases overall height by 150mm

Rear Panel

- Removeable panel to enclose rear if required
- Simple fixing method
- Ideal for use with floor plinth to provide totally enclosed cabinet