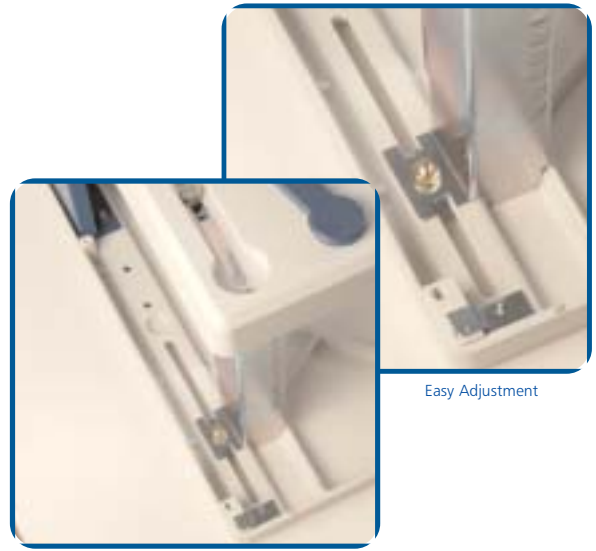




This unique cabinet innovation has been specifically designed to bring unrivalled advantages to wallbox cabinets and will offer a number of benefits to ultimately reduce the total cost of ownership.



Easy Adjustment



Access Wallbox development

Cooper B-Line's next generation of Access Wallbox offers stylish good looks to fit anywhere in today's office environment.

The range consists of high impact glass filled polyester (SMC) top and bottom panels, with hinged removable sides in all versions. However, inside you can choose mounting angles which are fixed in either 19" or ETSI configurations.

Alternatively, you may choose even more access by having a swing frame version. Simply by releasing one side panel and opening two spring pins the equipment can swing through 180°.

A choice is available of standard or ventilated side panels. The ventilated panels are already pierced and if required will accept standard 119mm square fans.

- **Totally open construction**
 - no corner posts
 - unrivalled working access
 - excellent cabling facilities
 - unrestricted top/base cable entry
- **Network installations are made easy**
- **Stylish appearance blends elegance with functionality**

● UNIQUE

So what makes the Access Wallbox so different from a conventional cabinet? The unique construction, open architecture without corner posts, enables the quick removal of all panels/doors to completely expose the open frame for installation of cables and/or equipment. Far neater, faster and user friendly cable installations are possible compared with conventional cabinets. The resultant installation is much easier to maintain with ready access to equipment and patch panels and the avoidance of messy, haphazard cabling arrangements.

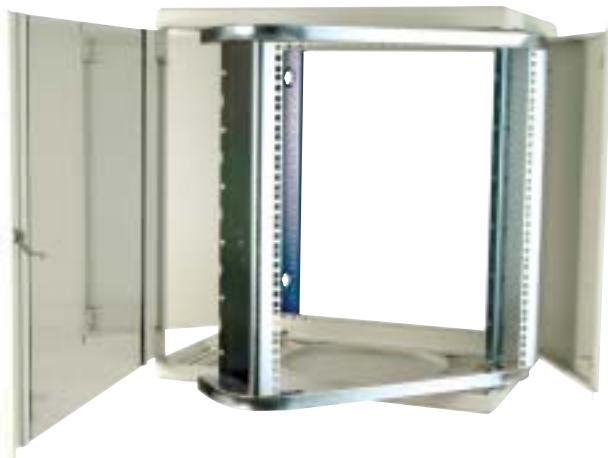
● EFFECTIVE

The Access Wallbox open frame structure provides all round total accessibility, prior to fitting panels and doors, which gives installers maximum working access and the opportunity to greatly improve installation times. The elimination of corner posts also removes the need to excessively inset 19" mounting angles, achieving maximum equipment and working space.

● FEATURES

- Fast, efficient installation utilising wall mounted bracket
- Easy, cabling with no obstructions
- Quick release side panels
- Quick release, lockable front door giving single key security
- Five height configurations: 6U, 9U, 12U, 15U and 18U
- 500mm & 600mm overall depth
- Cable access through special gland plates allowing installation over previously installed cables
- Adjustable 19" mounting angles with markings

Swing Frame in Operation



Complete Enclosure



● OPTIONS

- 180° opening swing frame with adjustable angles.
Right or left hand hinge availability
- Forced air cooling system
- ETSI mounting rails
- Rear panel available
- Mounting for horizontal power distribution units



Wallbox mounting-bracket

Side Panels in Half Open Position

Readily available - fully assembled

Choose from:

5 popular heights 6,9,12,15 & 18U

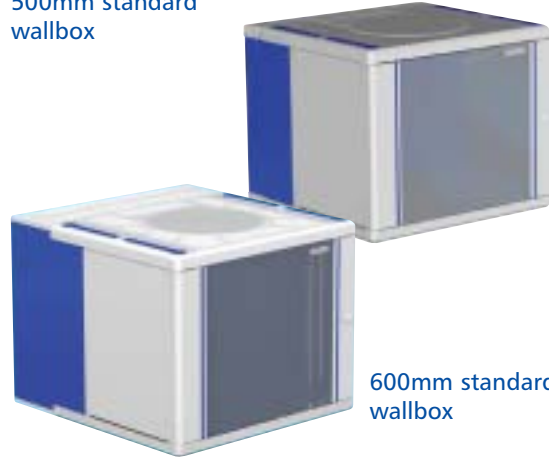
1 standard width 640mm

2 cabinet depths 500mm & 600mm

Each standard cabinet is supplied in the following configuration:

- A frame with 2 off adjustable 19" vertical mounting angles
- 2 off 19" up rights fixed at the rear of the box
- Lockable glazed front door or optional metal door
- Quick fit / removable side panels
- Top and base panels with easy access
- Light grey panels with blue trim

500mm standard wallbox

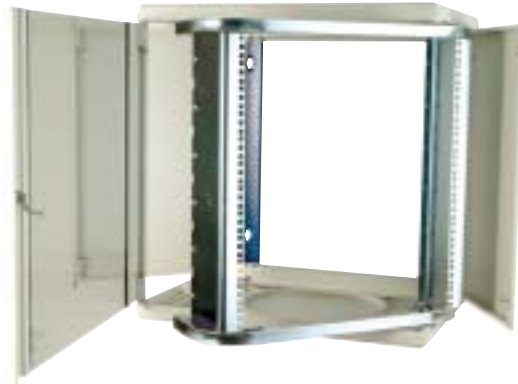


600mm standard wallbox

Standard Cabinets						
Wallbox Configuration	Plain Panels	Vented Panels	Glass Door	Steel Door	Unit Height	Depth
AWB-PS-GD-F-6U-5D	•		•		6U	500mm
AWB-PS-GD-F-9U-5D	•		•		9U	500mm
AWB-PS-GD-F-12U-5D	•		•		12U	500mm
AWB-PS-GD-F-15U-5D	•		•		15U	500mm
AWB-PS-GD-F-18U-5D	•		•		18U	500mm
AWB-VS-GD-F-6U-5D		•	•		6U	500mm
AWB-VS-GD-F-9U-5D		•	•		9U	500mm
AWB-VS-GD-F-12U-5D		•	•		12U	500mm
AWB-VS-GD-F-15U-5D		•	•		15U	500mm
AWB-VS-GD-F-18U-5D		•	•		18U	500mm
AWB-PS-GD-F-6U-6D	•		•		6U	600mm
AWB-PS-GD-F-9U-6D	•		•		9U	600mm
AWB-PS-GD-F-12U-6D	•		•		12U	600mm
AWB-PS-GD-F-15U-6D	•		•		15U	600mm
AWB-PS-GD-F-18U-6D	•		•		18U	600mm
AWB-VS-GD-F-6U-6D		•	•		6U	600mm
AWB-VS-GD-F-9U-6D		•	•		9U	600mm
AWB-VS-GD-F-12U-6D		•	•		12U	600mm
AWB-VS-GD-F-15U-6D		•	•		15U	600mm
AWB-VS-GD-F-18U-6D		•	•		18U	600mm
AWB-PS-SD-F-6U-5D	•			•	6U	500mm
AWB-PS-SD-F-9U-5D	•			•	9U	500mm
AWB-PS-SD-F-12U-5D	•			•	12U	500mm
AWB-PS-SD-F-15U-5D	•			•	15U	500mm
AWB-PS-SD-F-18U-5D	•			•	18U	500mm
AWB-VS-SD-F-6U-5D		•		•	6U	500mm
AWB-VS-SD-F-9U-5D		•		•	9U	500mm
AWB-VS-SD-F-12U-5D		•		•	12U	500mm
AWB-VS-SD-F-15U-5D		•		•	15U	500mm
AWB-VS-SD-F-18U-5D		•		•	18U	500mm
AWB-PS-SD-F-6U-6D	•			•	6U	600mm
AWB-PS-SD-F-9U-6D	•			•	9U	600mm
AWB-PS-SD-F-12U-6D	•			•	12U	600mm
AWB-PS-SD-F-15U-6D	•			•	15U	600mm
AWB-PS-SD-F-18U-6D	•			•	18U	600mm
AWB-VS-SD-F-6U-6D		•		•	6U	600mm
AWB-VS-SD-F-9U-6D		•		•	9U	600mm
AWB-VS-SD-F-12U-6D		•		•	12U	600mm
AWB-VS-SD-F-15U-6D		•		•	15U	600mm
AWB-VS-SD-F-18U-6D		•		•	18U	600mm

Swing Frame Cabinets are available in all of the above configurations. For Swingframe Code replace 'F' with 'SF'

Swing Frame Option

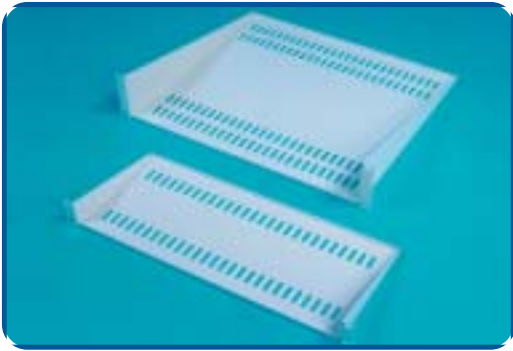


Ventilation Options

Ventilated side panels



Optional 119mm fans



Cantilever Shelves

Cantilever Shelves:

Fit to front face of 19" mounting angles. Ideal for modems, hubs or other networking equipment.

Materials and Finish:

- 1.5mm steel, painted light grey

Description	Height 'U'	Depth	Part Number
19" Front Mounted	1	190	MS19
19" Front Mounted	2	400	MS40
19" Front Mounted	3	400	MS403



19" Front Panels

19" Front Panels

Blank-off unused portions of 19" front mounting area or provide mounting face to suit customers requirements. Available in heights from 1U to 6U in 1U increments, plus a 12U size.

Material and finish: 1.5mm steel, painted light grey or satin anodised aluminium.

Description	Height 'U'	Steel	Aluminium
19" Front Panel	1	PPS1	PPA1
19" Front Panel	2	PPS2	PPA2
19" Front Panel	3	PPS3	PPA3
19" Front Panel	6	PPS6	PPA6



Plastic Cable Tidies

Plastic Cable Tidies:

With ever-increasing high density cabling applications, effective cable management is required to minimise installation times and create maximum flexibility for installers and end users alike.

To compliment the unique Access open frame, Cooper B-Line offer a small plastic cable tidy.

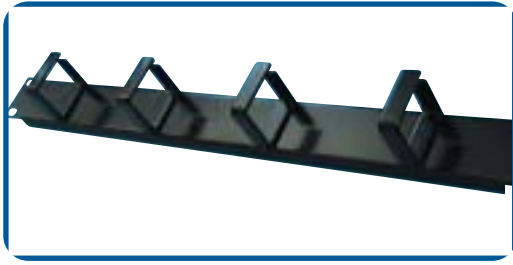
Features:-

- Fits Directly To 19" Panel Mounts
- Single Hole Fixing
- Hinged Gate Clip Action
- Multiple Mounting Positions

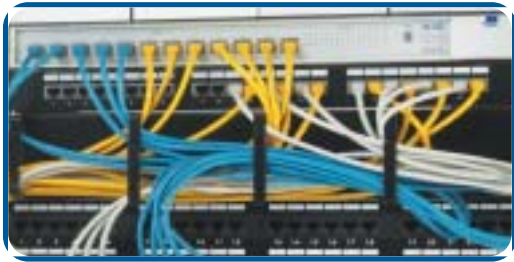
Technical Overview:-

- Mid-Grey Plastic
- CTS 68mm x 30mm internal opening
80mm x 40mm x 26mm external dimensions

Description	Part Number
Small mid grey tidy	CTS



Jumper Ring Panels



Typical Configuration



Horizontal Mounting Bracket



Wallbox Rear Panels

Jumper Ring Panels:

To compliment the unique Access open frame, effective horizontal cable management remains a necessary element of any cabling system.

Based on universal 19" mounting centres (IEC 297 standard), the 1U and 2U high panels have welded cable support hoops.

Features:-

- Fits Directly To 19" Panel Mounts
- Four Cable Loops Per Panel

Technical Overview:-

- Panel - 1.5mm Mild Steel
- Loops - 3.0mm Mild Steel
- Finish - Black Powder Coated Texture

Description	Part Number
Jumper ring panel 1U	JRP1
Jumper ring panel 2U	JRP2

Power Distribution

The Power Distribution Unit is designed specifically for the 19" electronic enclosure system.

Benefits

- Suitable for horizontal applications
- Robust all aluminium housing
- BS1363 sockets angled for optimum cable dressing
- Shrouded switch with separate illuminated neon
- Integral 19" mounting brackets
- 3 metre input lead terminated with a BS1363 plug fused at 13A
- 2U of rack space is required for horizontal units when fitted to the front 19" mountings
- Unit overall rating 13A, 250V

Description	Part Number
6 way BS1363 Horizontal Mounting PDU Switched 13amp	PSH06DC21SN3DB

Access Wallbox Fan Kit

Description	Part Number
Access Wallbox Fan Kit	FFK23

Access Wallbox Rear Panel

Description	Part Number
6U Access Wallbox Rear Panel	AWBRP6
9U Access Wallbox Rear Panel	AWBRP9
12U Access Wallbox Rear Panel	AWBRP12
15U Access Wallbox Rear Panel	AWBRP15
18U Access Wallbox Rear Panel	AWBRP18